



rtc[®]

COUPLING TECHNOLOGY
www rtc-couplings.com



106

rtc TYPE

NEW DESIGN !
SINGLE & DOUBLE Shut-Off



Temperature Range - Temperaturbereich

Nitrile (N)	-20°C + 100°C (-4°F + 212°F)
FPM (V)	-20°C + 180°C (-4°F + 356°F)

Working Pressure - Betriebsdruck

rtc 106.25	10 bar (145 PSI)
rtc 106.33	10 bar (145 PSI)
rtc 106.42	10 bar (145 PSI)
rtc 106.50	10 bar (145 PSI)
rtc 106.63	10 bar (145 PSI)
rtc 106.110	10 bar (145 PSI)

Flow size - Nennweiten

rtc 106.25	25 mm
rtc 106.33	33 mm
rtc 106.42	42 mm
rtc 106.50	50 mm
rtc 106.63	63 mm
rtc 106.110	110 mm

Material

Socket Body- Kupplungsgrundkörper	Brass chrome plated - Messing verchromt
Sleeve - Hülse	Brass chrome plated - Messing verchromt
Springs - Federn	Stainless Steel - Edelstahl
Locking Ring - Sprengring	Stainless Steel Edelstahl
Balls - Kugeln	Stainless Steel - Edelstahl
Seals - Dichtungen	Nitrile

Plug - Nippel	AISI 420 hardened - AISI 420 gehärtet
---------------	--

Standard version - Standardversion

Brass - Messing
NBR (N)

Options - Optionen

Stainless Steel - Edelstahl

Using Area

- On temperature regulation applications with hot or cold water, oil etc.
- Injection moulding industries.
- On steam line
- Suction coupling for material conveying (Plastic Granule Carrier Coupling)
- Full flow passage

Anwendungsbereiche

- Zuleitung für die Temperierung / Druckluft
- Kühlung mit Öl oder Wasser
- Kunststoffindustrie
- Dampfanwendungen
- Kupplung für Materialbeförderung (Kunststoffgranulat)
- Voller Durchgang

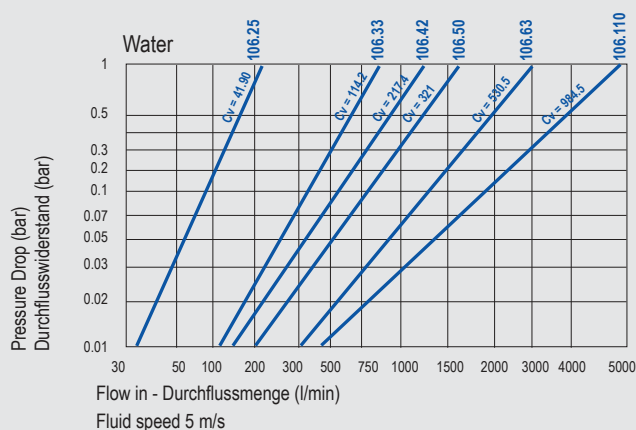
Material of 106.110

Socket Body- Kupplungsgrundkörper	Aluminium
Sleeve - Hülse	Aluminium

Plug - Nippel	Aluminium
---------------	-----------



Flow Rate vs Pressure Drop Graph / Durchflussrate vs Druckabfall



106
rtc TYPE

rtc TYPE 106

Cylindrical female thread socket / Kupplung mit Innengewinde zylindrisch



Socket / Kupplung

Size / Größe

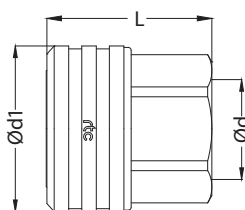
Order No / Bestellnr.

Ød

Ød1

L

HEX.



25

106.25 SFF 33

BSP 1

54

57

41

33

106.33 SFF 42

BSP 1-1/4

65

62

50

42

106.42 SFF 48

BSP 1-1/2

78

66

60

50

106.50 SFF 60

BSP 2

89

70

70

63

106.63 SFF 75

BSP 2-1/2

109

84

90

110

106.110 SFF 113

BSP 4

180

175

-

rtc TYPE 106

Cylindrical female thread socket with valve / Verschlusskupplung mit Innengewinde zylindrisch



Socket / Kupplung

Size / Größe

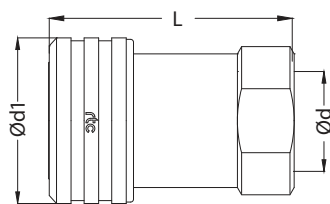
Order No / Bestellnr.

Ød

Ød1

L

HEX.



Double Shut-off

25

106.25 SFB 33

BSP 1

57

87

41

33

106.33 SFB 42

BSP 1-1/4

65

103

60

rtc TYPE 106

Cylindrical male thread socket / Kupplung mit Außengewinde zylindrisch



Socket / Kupplung

Size / Größe

Order No / Bestellnr.

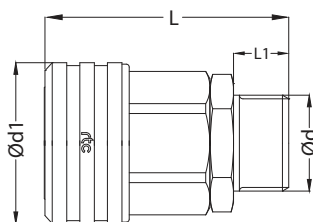
Ød

Ød1

L

L1

HEX.



25

106.25 SMF 33

BSP 1

54

84

19

41

33

106.33 SMF 42

BSP 1-1/4

65

91

19

50

42

106.42 SMF 48

BSP 1-1/2

78

98

20

60

50

106.50 SMF 60

BSP 2

89

110

25

70

63

106.63 SMF 75

BSP 2-1/2

109

131

27

90

rtc TYPE 106

Standard hose tail socket / Kupplung mit gerader Standard - Schlauchtülle



Socket / Kupplung

Size / Größe

Order No / Bestellnr.

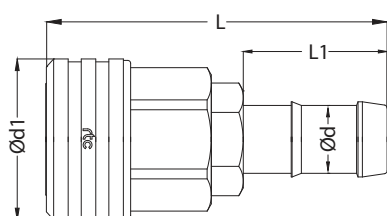
Ød

Ød1

L

L1

HEX.



25

106.25 SHF 25-HT8

25 mm

54

117

50

41

25

106.25 SHF 32-HT8

32 mm

54

117

50

41

33

106.33 SHF 32-HT8

32 mm

65

122

50

50

33

106.33 SHF 38-HT8

38 mm

65

122

50

50

42

106.42 SHF 44-HT8

44 mm

78

126

50

60

50

106.50 SHF 50-HT8

50 mm

89

149

50

70

63

106.63 SHF 63-HT8

63 mm

109

179

75

90

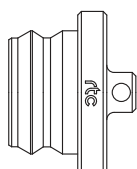
rtc TYPE 106

Dust cup for socket / Staubkappe für Kupplung

Dust cup / Staubkappe

Size / Größe

Order No / Bestellnr.



25

106.25 SD 00

33

106.33 SD 00

42

106.42 SD 00

50

106.50 SD 00

63

106.63 SD 00

110

106.110 SD 00



Cylindrical female thread plug / Nippel mit Innengewinde zylindrisch

TYPE 106 **rtc**

Plug / Nippel	Size / Größe	Order No / Bestellnr.	Ød	Ød1	L	HEX.
	25	106.25 PFF 33	BSP 1	45	61	41
	33	106.33 PFF 42	BSP 1-1/4	55	66	50
	42	106.42 PFF 48	BSP 1-1/2	65	74	60
	50	106.50 PFF 60	BSP 2	75	78	71
	63	106.63 PFF 75	BSP 2-1/2	90	83	84
	110	106.110 PFF 113	BSP 4	150	155	-



Cylindrical female thread plug with valve / Verschlussnippel mit Innengewinde zylindrisch

TYPE 106 **rtc**

Plug / Nippel	Size / Größe	Order No / Bestellnr.	Ød	Ød1	L	HEX.
	25	106.25 PFB 33	BSP 1	45	88	41
	33	106.33 PFB 42	BSP 1-1/4	64	105	55

Double Shut-off



Cylindrical male thread plug / Nippel mit Ausengewinde zylindrisch

TYPE 106 **rtc**

Plug / Nippel	Size / Größe	Order No / Bestellnr.	Ød	Ød1	L	L1	HEX.
	25	106.25 PMF 33	BSP 1	45	88	19	41
	33	106.33 PMF 42	BSP 1-1/4	55	95	19	50
	42	106.42 PMF 48	BSP 1-1/2	65	106	20	60
	50	106.50 PMF 60	BSP 2	75	118	25	71
	63	106.63 PMF 75	BSP 2-1/2	90	130	27	84



Standard hose tail plug / Nippel mit gerader Standard - Schlauchtülle

TYPE 106 **rtc**

Plug / Nippel	Size / Größe	Order No / Bestellnr.	Ød	Ød1	L	L1	HEX.
	25	106.25 PHF 25-HT8	25 mm	45	122	50	41
	25	106.25 PHF 32-HT8	32 mm	45	122	50	41
	33	106.33 PHF 32-HT8	32 mm	55	127	50	50
	33	106.33 PHF 38-HT8	38 mm	55	127	50	50
	42	106.42 PHF 44-HT8	44 mm	65	131	50	60
	50	106.50 PHF 52-HT8	52 mm	75	149	50	71
	63	106.63 PHF 63-HT8	63 mm	90	178	75	84

